

NCPDN 2014

**Plant Disease Diagnostics Clinic:
2013 Highlights**

Brian D. Hudelson

Department of Plant Pathology

University of Wisconsin-Madison/Extension



**2013 PDDC Highlights
Plum Pockets**



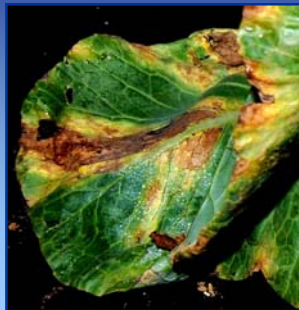
**2013 PDDC Highlights
Brown Rot**



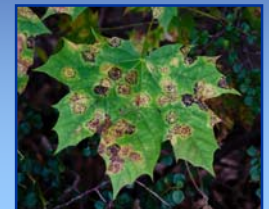
**2013 PDDC Highlights
Southern Blight**



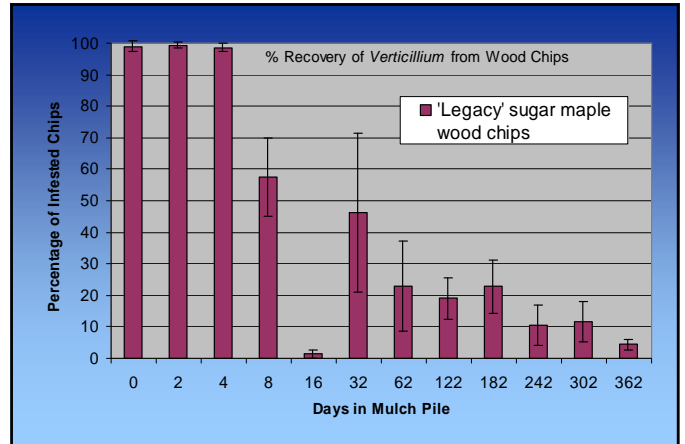
**2013 PDDC Highlights
Black Rot**



**2013 PDDC Highlights
Tar Spot**

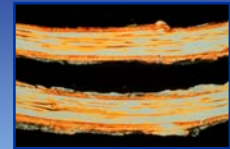


2013 PDDC Highlights Verticillium Wilt



- **Wood Chips as an Inoculum Source**
 - **Amur maple**
 - 30.0%/25.0% (Trted)
 - 0.0%/0.0% (Non-Trted)
 - **Green Ash**
 - 23.7%/10.5% (Trted)
 - 0.0%/0.0% (Non-Trted)
 - **Redbud**
 - 10.7%/13.3% (Trted)
 - 0.0%/0.0% (Non-Trted)

2013 PDDC Highlights Oak Wilt



2013 PDDC Highlights Non-Diseases



2013 PDDC Highlights PDDC Potpourri

- **Staff changes**
 - **Phil Pellitteri (retired Feb. 28)**
 - **PJ Liesch (interim Insect Diagnostician)**
 - **Ann Joy (retiring Sept. 30)**
 - **Paul Koch (new Extension Turf Pathologist)**
 - **Bruce Schweiger (new Turf Diagnostician)**

2013 PDDC Highlights
PDDC Potpourri

- **Outreach resources**
 - PDDC website (<http://pddc.wisc.edu>)
 - University of Wisconsin Garden Facts
 - Wisconsin Disease Almanac
 - Wisconsin Horticulture Update (<http://fyi.uwex.edu/wihortupdate>)
 - Twitter (@UWPDDC)