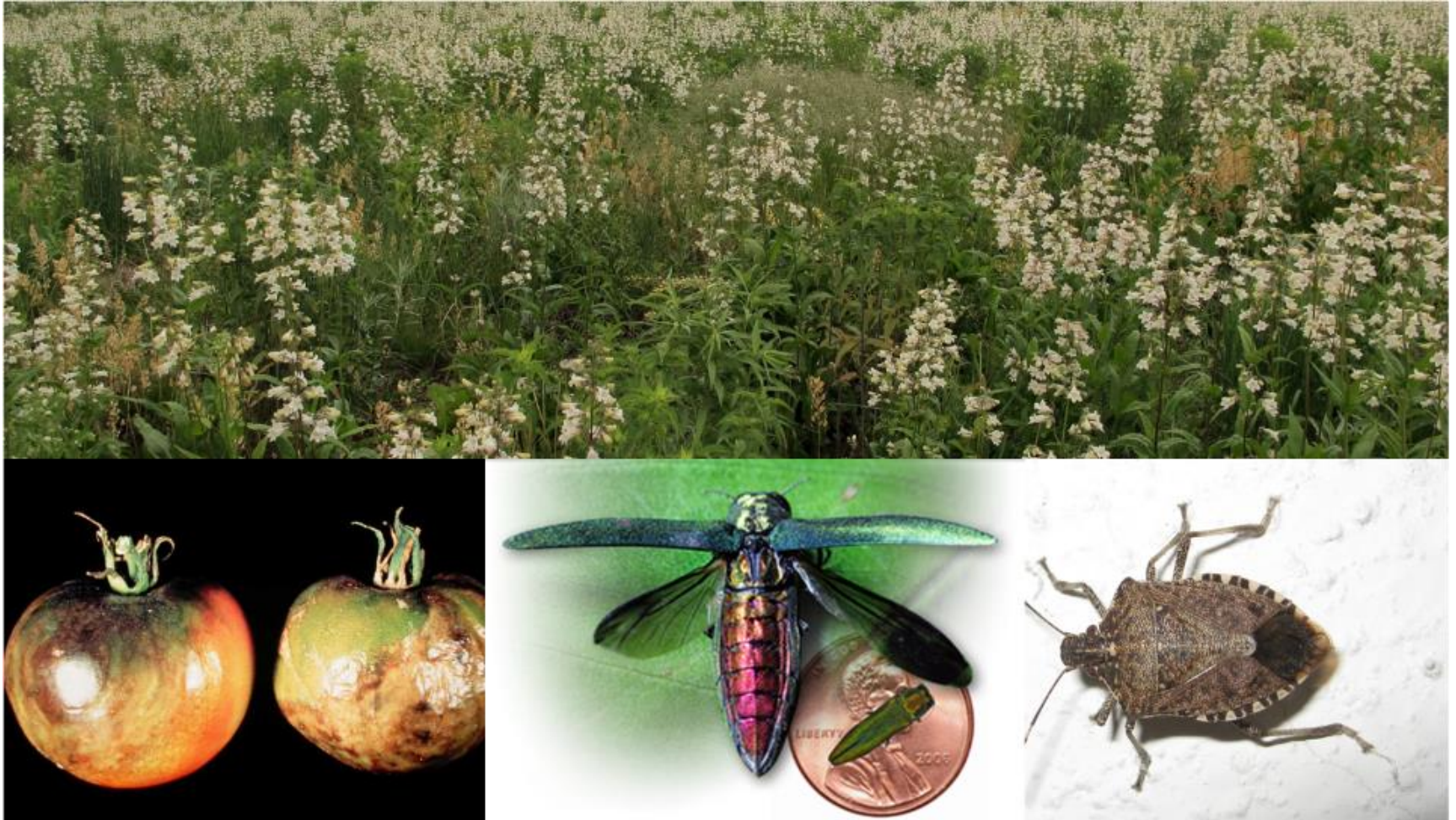


# WI First Detector Network (WIFDN)



Photos courtesy of Ice Age National Scenic Trail, UW Extension, WI DATCP, and Oregon Invasives Hotline



THE UNIVERSITY  
of  
**WISCONSIN**  
MADISON

**Tony Summers, [asummers2@wisc.edu](mailto:asummers2@wisc.edu)**

**[FYI.UWEX.EDU/WIFDN](http://FYI.UWEX.EDU/WIFDN)**

**UW  
Extension**

# What is WIFDN?

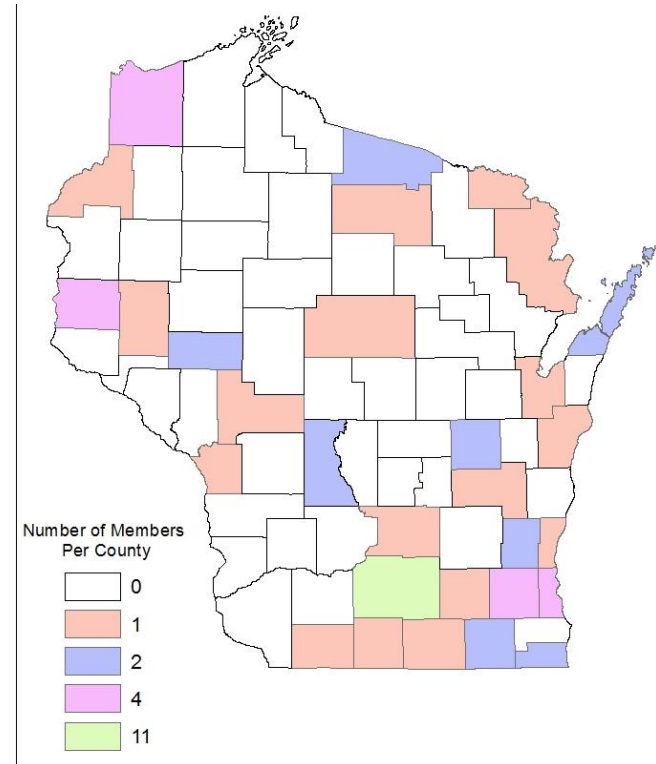
- ***A network of individuals*** interested in
  1. Detecting and reporting invasive species in Wisconsin
  2. Educating citizens about invasive species related issues
- GOAL: empower members of the public to take action against invasive species by providing training and volunteer opportunities.

# What does WIFDN do?

- Train participants
  - prerecorded videos
    - **Free**
  - interactive online sessions
    - \$30 cost to offset fees
  - in-field volunteering projects (**SUMMER**)
    - **Free**, online participants get priority.
- Promote volunteer opportunities
  - Participants asked to volunteer 24 hours

# Class of 2014

- 62 participants enrolled in the online class
  - Covering 33 WI counties
- 18 other participants involved, but didn't participate in online training
- Several educators are also involved



<http://fyi.uwex.edu/wifdn/>

# Training: Prerecorded videos

- Created 12 educational Youtube videos
  - 3-54 minutes in length (10-15 min avg.)
  - Partners (WI-DNR, USDA APHIS-PPQ)
- Benefit
  - Can be viewed multiple times
  - At the convenience of the participant
  - Allows us to build curriculum
  - Others can view

# Online interactive sessions

Provided additional content (Five 1.5 hour sessions)

1. Invasion biology
2. Impacts of invasives
  - Bush honeysuckle, EAB, late blight
3. Basics of identification/Reporting
4. Identification of target species
  - EAB, Brown marmorated stink bug, late blight, invasive plants
5. Volunteer opportunities/monitoring
  1. Cerceris survey (Art Wagner USDA APHIS PPQ)
  2. Invasive plants on roadsides (in cooperation with DOT)
  3. Independent monitoring

# Online interactive sessions

- Guest speakers
  - Amanda Gevens (UWEX Plant Pathology)
  - P.J. Liesch (UWEX Entomology)
  - Jennifer Feyerherm (WI-DNR)
  - Brian Hudleson (UWEX Plant Pathology)
  - Mike Maddox (UWEX MGVP)
  - Art Wagner (USDA APHIS PPQ)

# Results/Outcomes Training

- Pre-recorded videos
  - Videos viewed 2,970 times by 776 unique viewers (caveat)
- Online interactive sessions
  - Averaged 25 people session in person
  - Recorded sessions
    - viewed 227 times (avg 40)
    - 125 hours were watched



# In Field Training

- Summer of 2014
  - Cerceris and training on invasive plant monitoring
    - 6/24 North Rock county
    - 6/26 Waukesha county
    - 7/16 Florence county
    - 7/24 Door county
  - Field ID of EAB symptoms and smartphone reporting
    - 8/1 Ozaukee county

# 2014 Projects

- Mapping invasive plants
  - Smartphone apps and web-based tools
  - <http://apps.bugwood.org/mobile/gledn.html>
- Cerceris wasp baseball diamond survey
  - Fun and easy (and safe) survey project
  - [https://www.youtube.com/watch?v=\\_-oQeyx6tBU](https://www.youtube.com/watch?v=_-oQeyx6tBU)



# Use a smartphone to report invasives

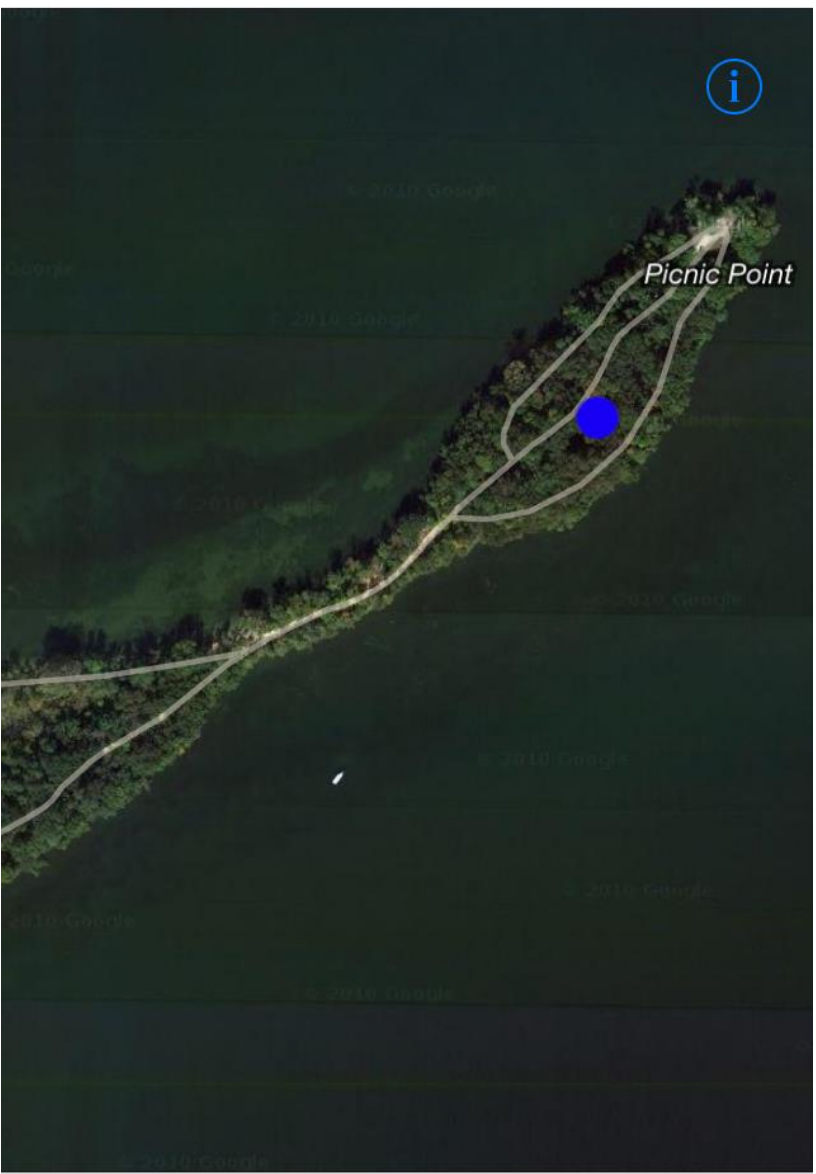


<http://apps.bugwood.org/mobile/gledn.html>

- smartphone provides GPS coordinates and a photo of your reported species.
- The app can store reports for submission at a later date.

\*Note will need to sign up for EddMaps (free)

Verizon LTE 12:27 PM 70%  
Pin Location:  
LAT:43.088672 LNG:-89.416411



Cancel Point Polygon Done

Verizon LTE 12:28 PM 70%  
Polygon Drawn:  
Approximatly 1.1308 Acres



Draw  
Cancel Point Polygon Done

# Interested in training existing volunteer groups?

- Let us know!
  - Partnering with other events/opportunities to promote WIFDN
    - Abbreviated training to volunteers from curriculum
    - Demonstrating how to use technology at existing event
- Benefits include
  - New topics, broaden program
  - Learn how to report with smartphone
  - Easily track volunteer hours

# Summary

- WIFDN off to a great start!
- Look for field events this summer
- If interested in partnering, contact us!
  - Letter can send to volunteer groups
- Will continue to document impact.....
- Will be evaluating program this winter
  - How can we improve the network?
- WIFDN program: [FYI.UWEX.EDU/WIFDN](http://FYI.UWEX.EDU/WIFDN)