

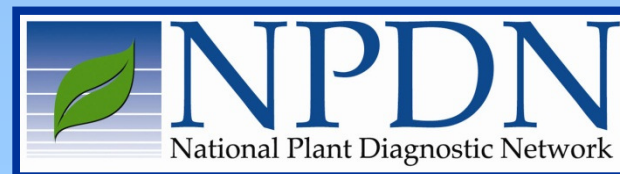
Wisconsin Horticulture Update 2013

Impatiens Downy Mildew

Brian D. Hudelson

Department of Plant Pathology

University of Wisconsin-Madison/Extension



Wisconsin Horticulture Update

Impatiens Downy Mildew

- ***Causes***

- ***Plasmopara obducens***
- ***Bremiella sphaerosperma***

- ***Hosts***

- ***Standard garden impatiens (I. walleriana)***
- ***Balsam impatiens (I. balsamina)***
- ***Jewelweed (I. pallida, I. capensis)***
- ***New Guinea impatiens (I. hawkeri)***
(resistant/tolerant)

Wisconsin Horticulture Update

Impatiens Downy Mildew

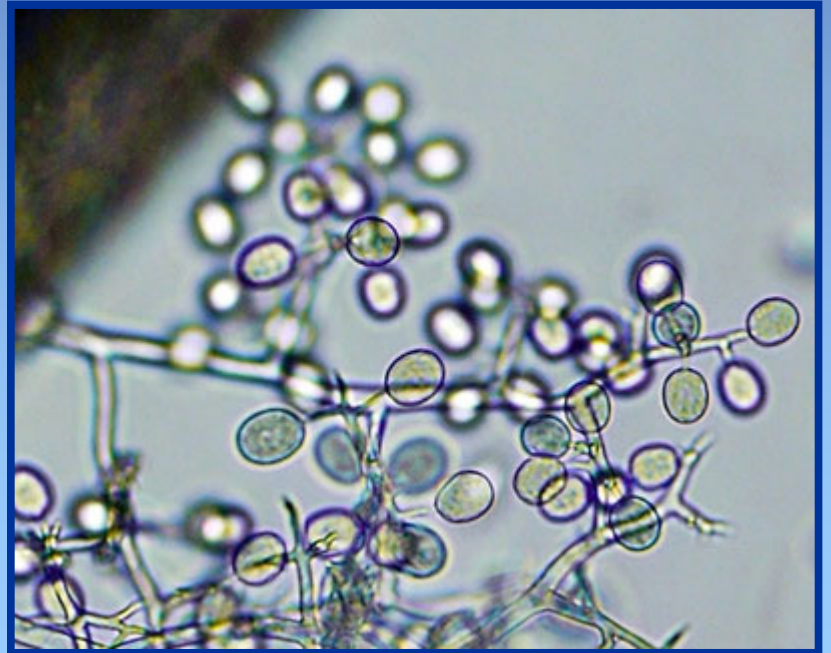
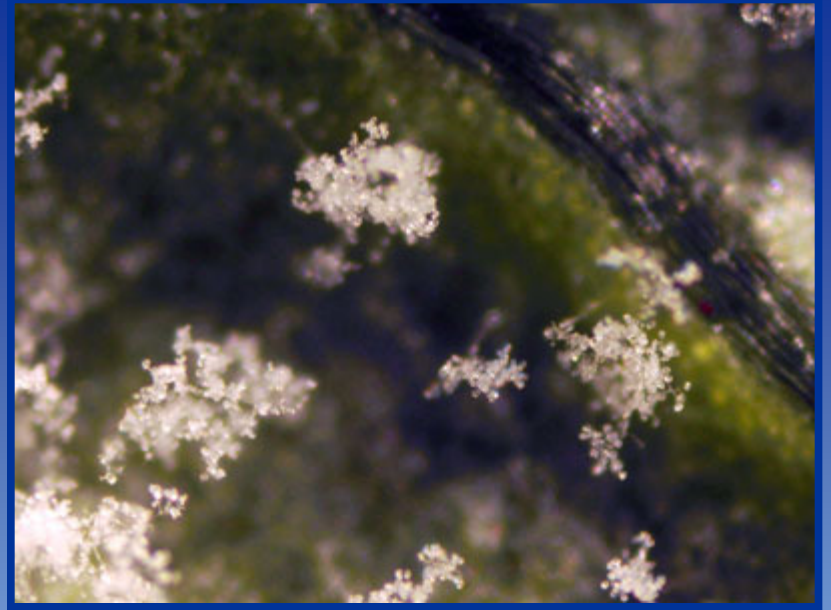
- *Geographical Distribution*
 - *Worldwide*
 - *Wherever impatiens are grown*
- *Survival*
 - *Infected plants*
 - *Soil or potting mixes*
 - *Seeds*

Wisconsin Horticulture Update

Impatiens Downy Mildew

- ***Movement***
 - *Infected plants*
 - *Seed*
 - *Wind-borne sporangia*
- ***Favorable Environment***
 - *Cool conditions (59 - 73 °F)*
 - *Long leaf wetness periods (> 6 hrs)*
 - *High humidity*





Wisconsin Horticulture Update

Impatiens Downy Mildew

- ***Control***
 - *Start with clean seed and transplants*
 - *Keep materials from different sources physically separated*
 - *DO NOT overcrowd plants (i.e., reduce humidity)*
 - *DO NOT overhead water (i.e., limit leaf wetness periods)*
 - *Scout frequently*

Wisconsin Horticulture Update

Impatiens Downy Mildew

- ***Control***
 - ***Obtain proper confirmation of the disease***
 - ***Bag and discard affected plants***
 - ***Symptomatic plants***
 - ***Asymptomatic surrounding plants***
 - ***Disinfect contaminated areas***
 - ***Commercial disinfectants***
 - ***10% bleach***
 - ***70% alcohol***

Wisconsin Horticulture Update

Impatiens Downy Mildew

- ***Control***
 - ***Use fungicides to prevent infections***
 - ***mefenoxam, fluopicolide, potassium phosphite, mancozeb, pyraclostrobin + boscalid, fluoxastobin, cyazofamid, dimethomorph, fenamidone, azoxystrobin***
 - ***Alternate active ingredients***
(http://www.frac.info/frac/publication/anhang/FRAC_CODE_LIST.pdf)
 - ***Apply at 7 day application intervals***
 - ***Move (i.e., rotate) impatiens production***

Plant Diseases
Where to Go for Help

Plant Disease Diagnostics Clinic
Department of Plant Pathology
University of Wisconsin-Madison
1630 Linden Drive
Madison, WI 53706-1598
(608) 262-2863
bdh@plantpath.wisc.edu
<http://pddc.wisc.edu>
<http://hort.uwex.edu>