

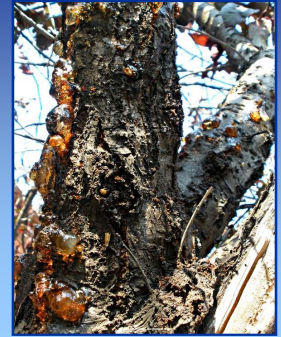
2018 CONEXSHOW

## Plant Disease Update

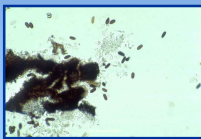
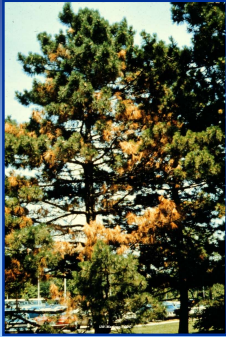
Brian D. Hudelson  
Department of Plant Pathology  
University of Wisconsin-Madison/Extension



## Plant Disease Update Bacterial Canker



## Plant Disease Update Diplodia Shoot Blight and Canker



## Plant Disease Update Fungal Canker Diseases



Nectria Canker



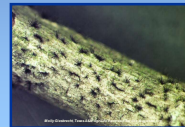
Golden Canker



Phomopsis Canker



Thyronectria Canker



Coryneum Canker

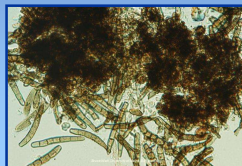


Cytospora Canker

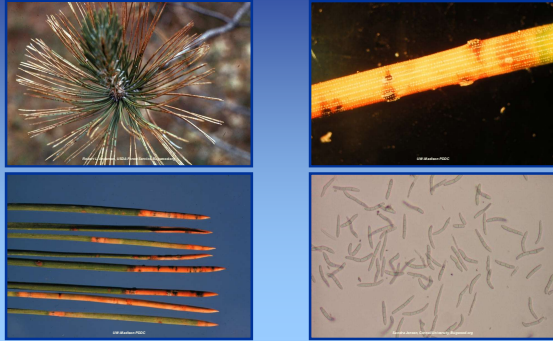
## Plant Disease Update Rhizosphaera Needle Cast



## Plant Disease Update Stigmata Needle Cast



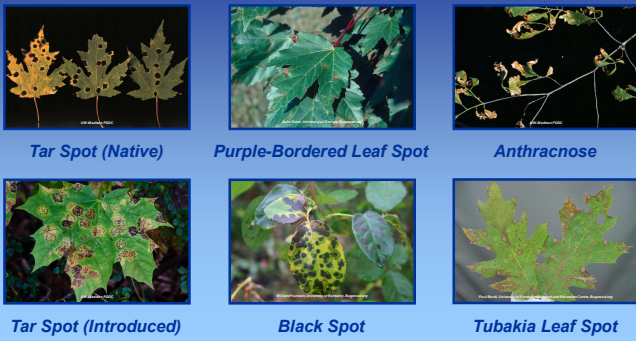
**Plant Disease Update  
Dothistroma Needle Blight**



**Plant Disease Update  
Scab (Apple and Pear)**



**Plant Disease Update  
Fungal Leaf Spots/Blights**



**Plant Disease Update  
Powdery Mildews**



**Plant Disease Update  
Gymnosporangium Rusts**



**Plant Disease Update  
Bur Oak Blight**





**Plant Disease Update  
Phytoplasma Diseases**



Ash Yellows



Spirea Stunt



Aster Yellows



Unknown (Barberry)

**Plant Disease Update  
Crown Gall**



**Plant Disease Update  
Viral Diseases**



Tobacco Mosaic



Impatiens Necrotic Spot



Tobacco Rattle



Cucumber Mosaic



Apple Mosaic



Hosta Virus X

**Plant Disease Update  
Boxwood Blight**



**Plant Disease Update  
Thousand Cankers Disease**



**Plant Disease Update  
How to Contact the PDDC**

Plant Disease Diagnostics Clinic  
 Department of Plant Pathology  
 University of Wisconsin-Madison  
 1630 Linden Drive  
 Madison, WI 53706-1598  
 (608) 262-2863  
 pddc@wisc.edu  
 http://pddc.wisc.edu  
 Follow on Facebook and Twitter @UWPDDC