

Plant Pest Summit 2018

*Plant Disease Diagnostics Clinic:
2017 Highlights*

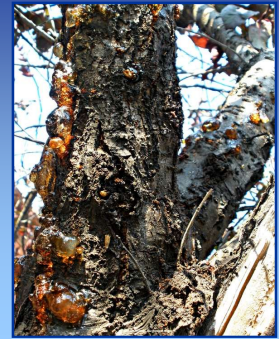
Brian D. Hudelson

Department of Plant Pathology

University of Wisconsin-Madison/Extension



*PDDC 2017 Highlights
Bacterial Canker*



*PDDC 2017 Highlights
Fungal Canker Diseases*



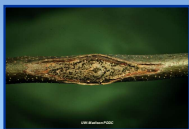
Nectria Canker



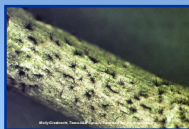
Golden Canker



Phomopsis Canker



Thyronectria Canker



Coryneum Canker



Cytospora Canker

*PDDC 2017 Highlights
Scab (Apple and Pear)*



*PDDC 2017 Highlights
Rusts*



Cedar-Apple Rust



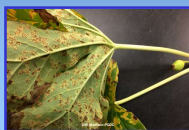
Bean Rust



Crown Rust



Cedar-Quince Rust



Mayapple Rust



Orange Rust

*PDDC 2017 Highlights
Crown Gall*



**PDDC 2017 Highlights
Phytoplasma Diseases**



Ash Yellows



Spirea Stunt



Aster Yellows



Unknown (Barberry)

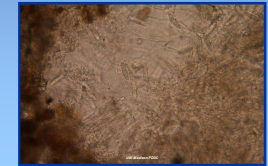
**PDDC 2017 Highlights
Silver Leaf**



**PDDC 2017 Highlights
Didymascella Needle Blight**



**PDDC 2017 Highlights
Dooks (Canavirgella) Needle Blight**



**PDDC 2017 Highlights
Something for Everyone Down Under**



**PDDC 2017 Highlights
How to Contact the PDDC**

**Plant Disease Diagnostics Clinic
Department of Plant Pathology
University of Wisconsin-Madison
1630 Linden Drive
Madison, WI 53706-1598
(608) 262-2863
pddc@wisc.edu
http://pddc.wisc.edu
Follow on Facebook and Twitter @UWPDDC**