

*IL Specialty Growers Conference 2019*

***Diseases of Cut Flowers***

*Ten Diseases You Can Learn to Hate (Love?)*

***Brian D. Hudelson***

***Department of Plant Pathology***

***University of Wisconsin-Madison/Extension***



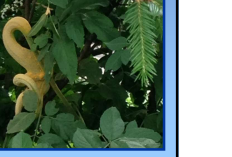
***Diseases of Cut Flowers***  
***Powdery Mildews***



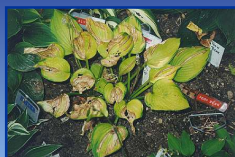
***Diseases of Cut Flowers***  
***Leaf Spots/Blights***



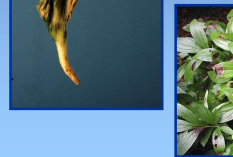
***Diseases of Cut Flowers***  
***Rusts***



***Diseases of Cut Flowers***  
***Foliar Nematode***



***Diseases of Cut Flowers***  
***Gray Mold/Botrytis Blight***



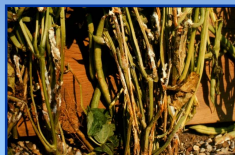
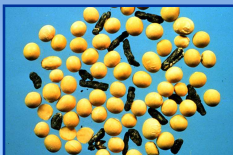
**Diseases of Cut Flowers**  
**Aster Yellows**



**Diseases of Cut Flowers**  
**Root/Crown/Stem Rots**



**Diseases of Cut Flowers**  
**White Mold**



**Diseases of Cut Flowers**  
**Southern Blight**



**Diseases of Cut Flowers**  
**Virus Diseases**



**Diseases of Cut Flowers**  
**Questions?**

**Plant Disease Diagnostics Clinic**  
**Department of Plant Pathology**  
**University of Wisconsin-Madison**  
**1630 Linden Drive**  
**Madison, WI 53706-1598**  
**(608) 262-2863**  
**[pddc@wisc.edu](mailto:pddc@wisc.edu)**  
**<https://pddc.wisc.edu>**  
**Follow on Facebook and Twitter @UWPDDC**